

# HP Indigo Production Stream Server, Powered by Creo

A comprehensive colour server for the demanding job shop



## Take ultimate control of your prints; streamline your workflow

The HP Indigo Production Stream Server, Powered by Creo, is a robust Digital Front End (DFE) that addresses the demanding workflow needs of the commercial print service provider, offering a comprehensive graphic arts feature set. The HP Indigo Production Stream Server is built exclusively for the HP Indigo by the Print-On-Demand Solutions (PODS) with the proprietary technology of Creo Color Servers. Creo is the best known name in the print production industry for its mature, feature-rich DFE solutions.

### **Print with outstanding offset quality and colour management**

The HP Indigo Production Stream Server helps maximise HP Indigo's unparalleled offset quality and colour – allowing print service providers to significantly differentiate themselves in digital colour printing.

- Advanced colour management and control enable superior continuous tone images
- Colour emulation assures perfect colour matching
- Image processing allows significant enhancements of low-resolution images
- Breakthrough HP Professional PANTONE® Emulation technology extends the functionality of Automatic PANTONE® calibration to any media with an ICC profile, helping professionals who print on a wide variety of media to achieve superior digital colour output.



To help deliver spot colour capabilities unmatched among digital presses, the HP Indigo Production Stream Server also supports CMYK-based spot colour editing – independent of brightness, gradation and contrast – as well as the following features:

- Fully automated trapping process solves mis-registration between separations (Creo patented FAF technology)
- Excellent auto-defaults with manual controls deliver outstanding colour and image quality
- Black overprint assures richer blacks
- GCR (Gray Component Replacement) supports ink savings
- RGB to CMYK conversion eliminates workflow steps
- Full support for HP Indigo press screening

#### **The unified workflow solution for the emerging print environment**

In today's dynamic printing industry, traditional offset and digital printing technology continue to carve out their respective positions in the production environment. Rather than compete for print opportunities, the two methods have begun to complement each other as commercial printers transition production capabilities from analogue into digital.

What's driving the move to hybrid production environments? Clearly, printers recognise the business rationale: increasing revenue and profitability require printers to add new services for their customers – products like web-to-print collateral-on-demand, personalised direct mail, short run books and manuals, photo-specialty services and other value-added, high margin applications made possible by digital printing.

The new HP Indigo Production Stream Server offers unique and easy integration with the industry leading Creo Prinergy and Brisque workflow solutions for the traditional commercial print industry. It integrates into a unified, hybrid offset/digital production operation to help printers expand their service and solution capabilities.

#### **Maximise profitability with automated JDF workflow solutions**

Today's increasingly complex demands in the commercial printing market, necessitate increased agility by print providers. The joint power of the HP and Creo PODS' workflow partner programmes is utilised by the HP Indigo Production Stream Server to provide an appropriate solution.

Driven by an open and solid industry-wide Job Definition Format (JDF), partner vendors work under an integrated system approach and empower the DFE to function as a cornerstone of full-blown end-to-end solutions: Press-sense's web-to-print capability automatically streams down for instant printing while in parallel, Objective Advantage controls super-efficient finishing available through JDF-enabled equipment from HP finishing partners such as Duplo and Horizon.

#### **Convenient, easy-to-use workflow operations**

With a user-friendly GUI, the HP Indigo Production Stream Server simplifies the workflow and eases the operation learning curve. Preflight provides quality assurance as the operator generates a preflight report to check high resolution images, fonts and processed spot colours. Last minute colour and imposition corrections also maximise flexibility, ensure fast turnaround and reduce the cost of error.

The HP Indigo Production Stream Server provides pre- and post-RIP job preview and editing to further enhance job control. To maximise flexibility, ensure fast turnaround and reduce errors, the DFE enables last minute colour and imposition corrections. The post-RIP imposition is both application and file format independent. Files are stored in a compact, ready-to-print format for immediate reprinting that requires no further processing.

The robust workflow delivers additional vital functionality, such as:

- Calibration – independent jobs enable reprint at any time on any digital press
- Imposition tool allows the use of more than 800 different template combinations covering standard commercial requirements
- Virtual printer, hot folder, PDL and PPD methods allow easy job setup and submission
- Post-RIPped files can be archived and retrieved through network
- OPI (Open Prepress Interface) standard and Creo's proprietary APR (Automatic Picture Replacement) technology provide smoother workflow
- Supported input files include Native PDF; PostScript Levels 1, 2 and 3; EPS; VPS; PPML (PODi compliant)

**Increase your margins and your competitive edge by adding high value pages to your service portfolio**

The HP Indigo Production Stream Server includes a vast range of high value job capabilities which suit production environments that need to cope simultaneously with a vast variety of jobs. It supports popular variable information formats, including Creo VPS (Variable Print Specification) and PODi PPML. Combined with its outstanding colour capabilities, this DFE is an ideal solution where extensive pre-press and proofing related work, photo-specialty retail campaigns, direct mail and other variable data jobs need to be added to a standard mix of short run, static, colour jobs.

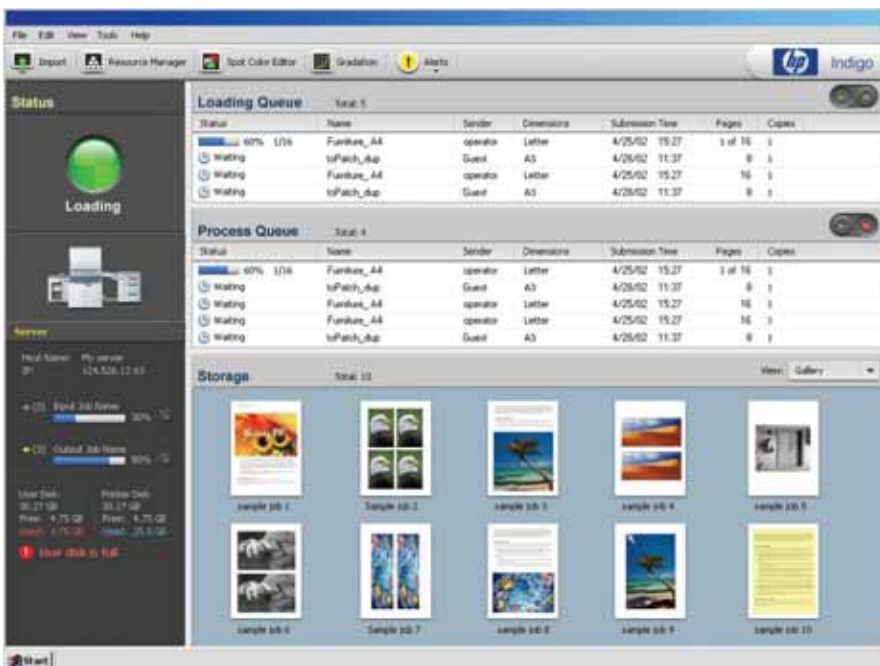
**The bottom line: comprehensive control, ease and profit**

The HP Indigo Production Stream Server is the one choice delivering a broad graphic arts feature set that's fully aligned with traditional Kodak workflows. It offers the connectivity to enable seamless integration with Prinergy and Brisque, and it supports JDF job ticket standards for automated workflows and other popular data formats.

This full featured DFE provides extensive functionality for job and colour management, and its user friendly interface now drives the exceptional family of HP Indigo digital presses.

Discover HP Indigo Production Stream Server and expand your world with a broader production spectrum and higher profitability.

The HP Indigo Production Stream Server, Powered by Creo, is a robust DFE that addresses the demanding workflow needs of the commercial print service provider and boasts a comprehensive graphic arts feature set



# HP Indigo Production Stream Server, Powered by Creo

- Architecture**
  - Microsoft Windows® XP Professional operating system
  - Dual Xeon™ 3.60GHz/2MB L2 cache processors
  - 800 MHz system bus
  - 1GB memory
  - 4x146GB hard drive
  - 16X DVD+/-RW, Dual Layer with LightScribe®
  - 17" flat panel monitor
  - Creo FusionHX RIP accelerator hardware
- Network support/services**
  - NIC Intel Pro MT 10/100/1000 LAN
  - 8 port switching hub
  - Ethernet 10/100/1000 Base T auto switching
  - Protocols: TCP/IP, AppleTalk, Novell IPX (NDS & Bindery), NetBEUI
  - Services: AppleShare compatible
  - Printing from Apple, Unix and Windows clients
  - File sharing for Apple, Unix and Windows
  - NFS for enhanced connectivity between Brisque and HP Indigo Production Stream Server
- Printer drivers**
  - Win 95, 98, NT4.0, Win 2000
  - MAC LaserWriter driver
- Engines Supported**
  - HP Indigo 1000, 1050, 3000, 3050, and 5000
- Space/Power requirements**
  - 45.5 cm high x 21.0 cm wide x 52.5 cm deep
  - Server weight: 19 Kg
  - Power consumption: 330W
  - Power supply voltage: 100-240AC 50/60 Hz (auto switching)
  - Maximum rated power: 600W
- Regulatory agency approvals**
  - FCC class A, Canadian EMI Class A, CE Mark, UL and C-UL

**North America**  
Hewlett-Packard Company  
20 Perimeter Summit Blvd.  
Mail Stop 401  
Atlanta, GA 30319  
USA  
Tel: +1 800 289 5986  
Fax: +1 404 648 2054

**Europe, Middle East and Africa**  
Hewlett-Packard Company  
Limburglaan 5  
6221 SH Maastricht  
The Netherlands  
Tel: +31 43 356 5656  
Fax: +31 43 356 5600

**Asia Pacific**  
Hewlett-Packard Company  
138 Depot Road  
Singapore 109683  
Tel: +65 6727 0777  
Fax: +65 6276 3160

**Latin America**  
Hewlett-Packard Company  
5200 Blue Lagoon Drive  
Suite 950  
Miami, FL 33126  
USA  
Tel: +305 267 4220  
Fax: +305 265 5550

**Israel**  
Hewlett-Packard Company  
Kiryat Weizmann  
P.O. Box 150  
Rehovot 76101  
Israel  
Tel: +972 8 938 1818  
Fax: +972 8 938 1338

The HP Indigo Production Stream Server currently supports the HP Indigo presses 1000, 1050, 3000, 3050 and 5000. Future versions will also support other HP Indigo digital presses.

PANTONE® and other PANTONE, Inc. trademarks are the property of PANTONE, Inc.

© 2006 Hewlett-Packard Development Company, L.P. The information contained herein is subject to change without notice. The only warranties for HP products and services are set forth in the express warranty statements accompanying such products and services. Nothing herein should be construed as constituting an additional warranty. HP shall not be liable for technical or editorial errors or omissions contained herein.

[www.hp.com/go/graphic-arts](http://www.hp.com/go/graphic-arts)

4AA0-8045EEE, 07/2007 Printed in Israel with an HP Indigo digital press

